

20th January
2023



Performance Dashboard up to and including November 2022



The data from this report is collected from the following sources:

Crime Data:

<https://data.london.gov.uk/download/mps-monthly-crime-dahboard-data/ceed0426-1852-480d-9d37-6daf2d72431b/Monthly%20Crime%20New%20Cats%20SNT%20Level%20Offs%20Type.csv>

Special Crime Data:

<https://data.london.gov.uk/download/mps-hate-crime-or-special-crime-dashboard-data/e29f08cf-358d-49d5-a607-ea035567540f/Monthly%20Crime%20Other%20Crime%20SNT%20Level%20Offs%20Type.csv>

ASB Data:

<https://www.london.gov.uk/what-we-do/mayors-office-policing-and-crime-mopac/data-and-statistics/crime-dashboard>

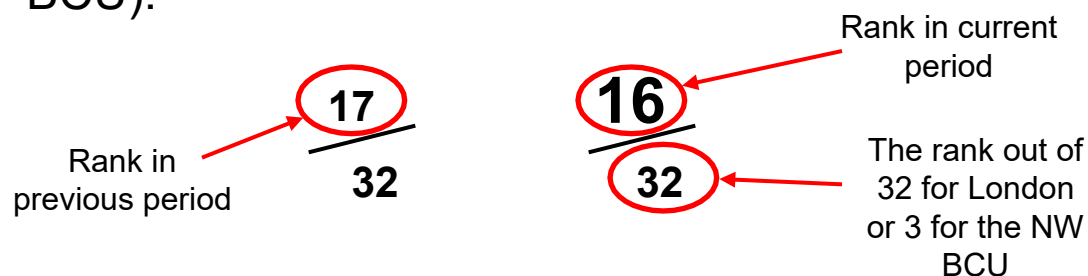
*Repeat ASB Data is gathered from the Metropolitan Police on request.

Slides 4-10 are formed from the above sources and will be presented by MPS NW BCU

Slides 11-16 are formed from LBB data (ECINS/CCTV) and will be presented by LBB

Notes Before We Start

- The lower the ranking the better Barnet is doing when compared with other boroughs across London or in the North West Borough Command Unit (NW BCU).



- Knife crime has previously been reported on as under 25s and non-DV only, this report will note all knife crime with injury which will give a higher number than previous.
- In the London comparison 1/32 is the best, 32/32 is the worst. Change is indicated by the Red Amber Green circle.
- In the NW BCS comparison 1/3 is the best, 3/3 is the worst. Change is indicated by the Red Amber Green arrow.

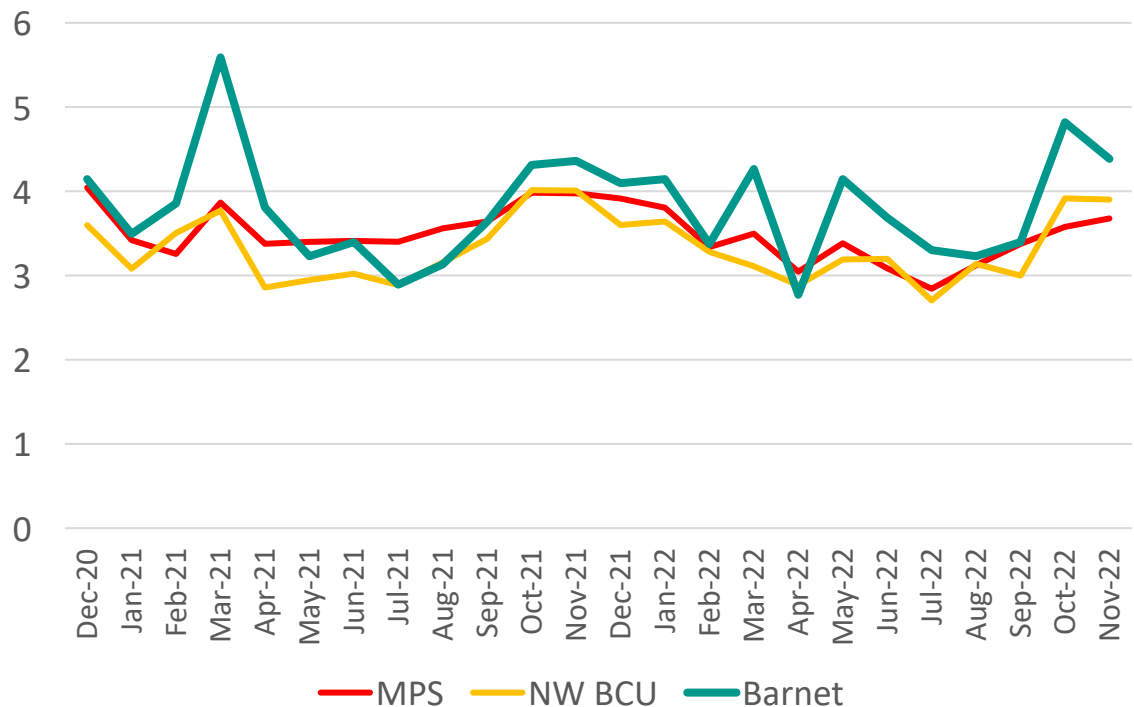
Domestic Burglary



In the 3 months of September 2022 to November 2022 there were 523 cases of Residential Burglary in Barnet

Trend

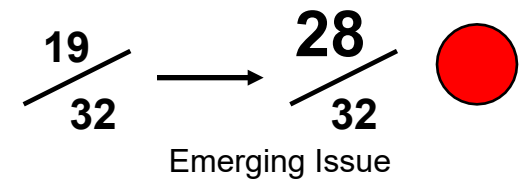
Residential Burglary per 10,000 Population



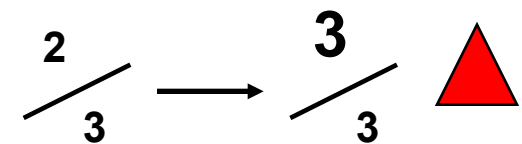
There were 1893 cases of Residential Burglary in Barnet in the 12 months up to November 2022. In the 12 months prior there were 1903. This is a decrease of 0.5%

3 Month Performance

MPS Comparison (3 Month Period) change from same period last year.



NW BCU Comparison (3 Month Period) change from same period last year.



There were 523 cases of Residential Burglary in the 3 months of September 2022 to November 2022. In the same period 12 months prior there were 511. This is an increase of 2.3%

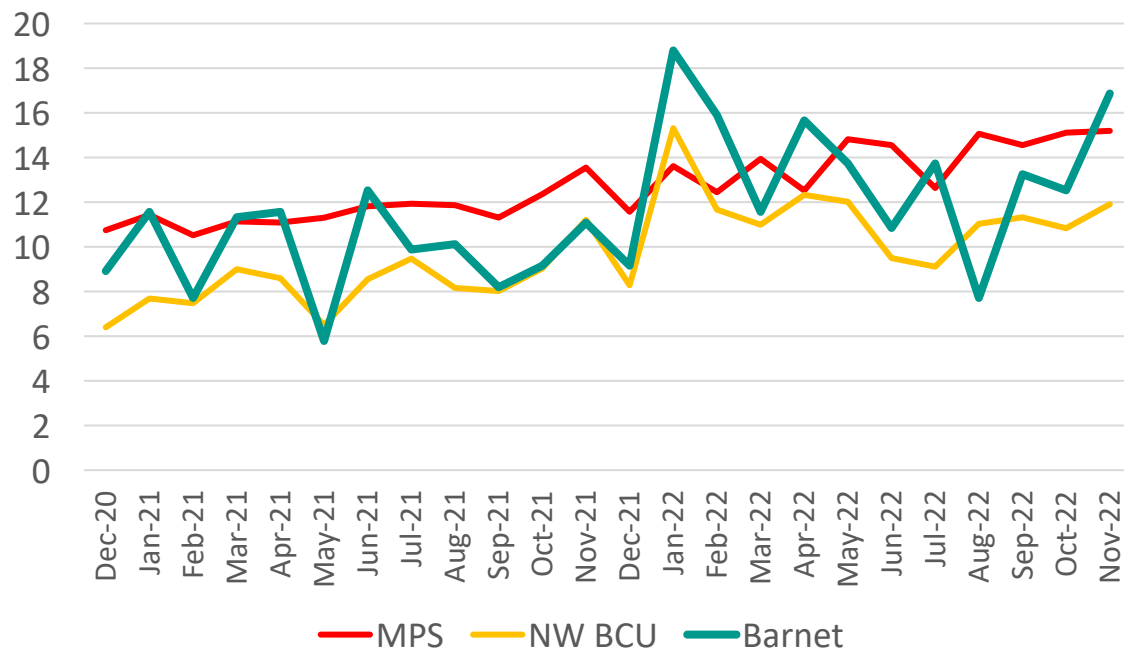
Burglary Business and Community



In the 3 months of September 2022 to November 2022 there were 177 cases of Non-Residential Burglary in Barnet

Trend

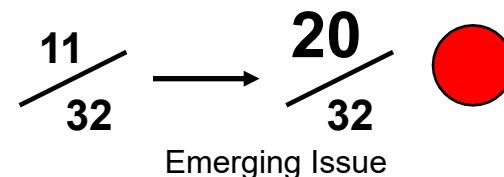
Non-Residential Burglary per 100,000 Population



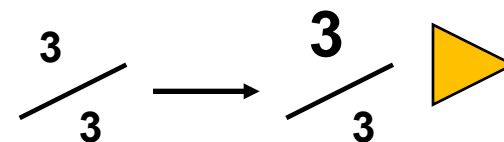
There were 663 cases of Non-Residential Burglary in Barnet in the 12 months up to November 2022. In the 12 months prior there were 489. This is an increase of 35.6%

3 Month Performance

MPS Comparison (3 Month Period) change from same period last year.



NW BCU Comparison (3 Month Period) change from same period last year.



There were 177 cases of Non-Residential Burglary in the 3 months of September 2022 to November 2022. In the same period 12 months prior there were 118. This is an increase of 50%

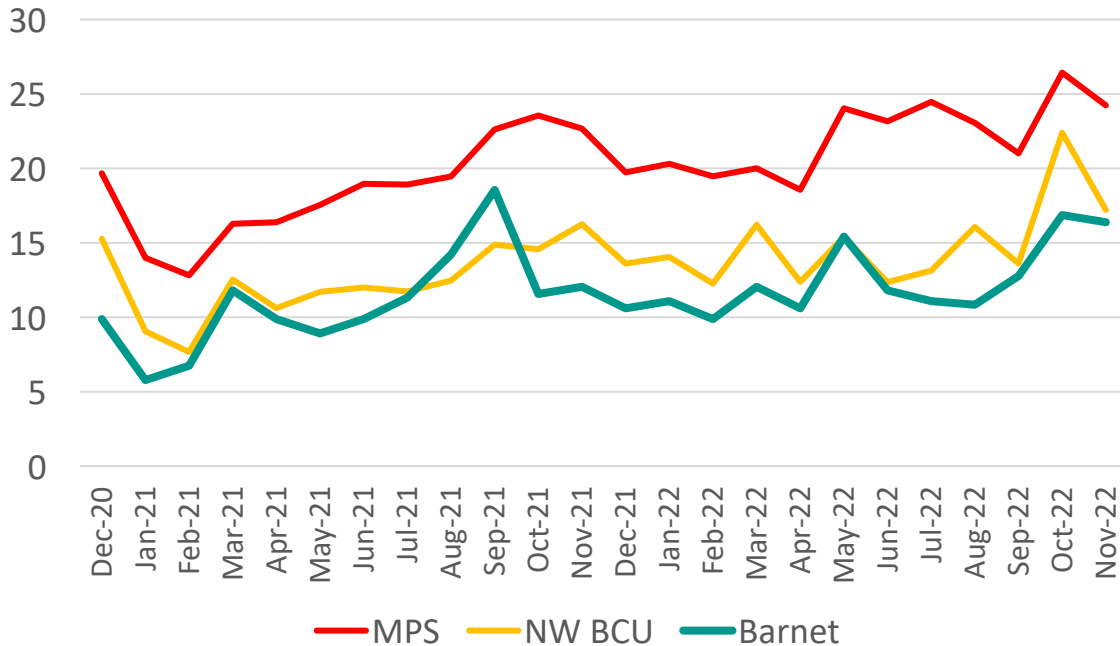
Robbery of Personal Property



In the 3 months of September 2022 to November 2022 there were 191 cases of Robbery of Personal Property in Barnet

Trend

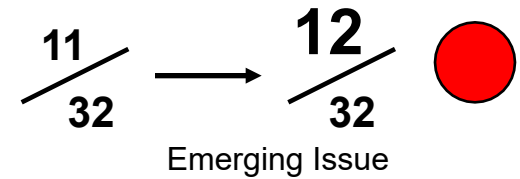
Robbery of Personal Property per 100,000 Population



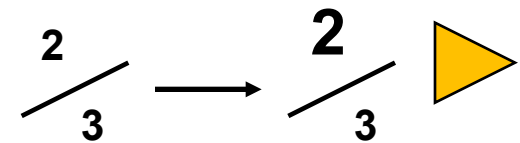
There were 620 cases of Robbery of Personal Property in Barnet in the 12 months up to November 2022. In the 12 months prior there were 542. This is an increase of 14.4%

3 Month Performance

MPS Comparison (3 Month Period) change from same period last year.



NW BCU Comparison (3 Month Period) change from same period last year.



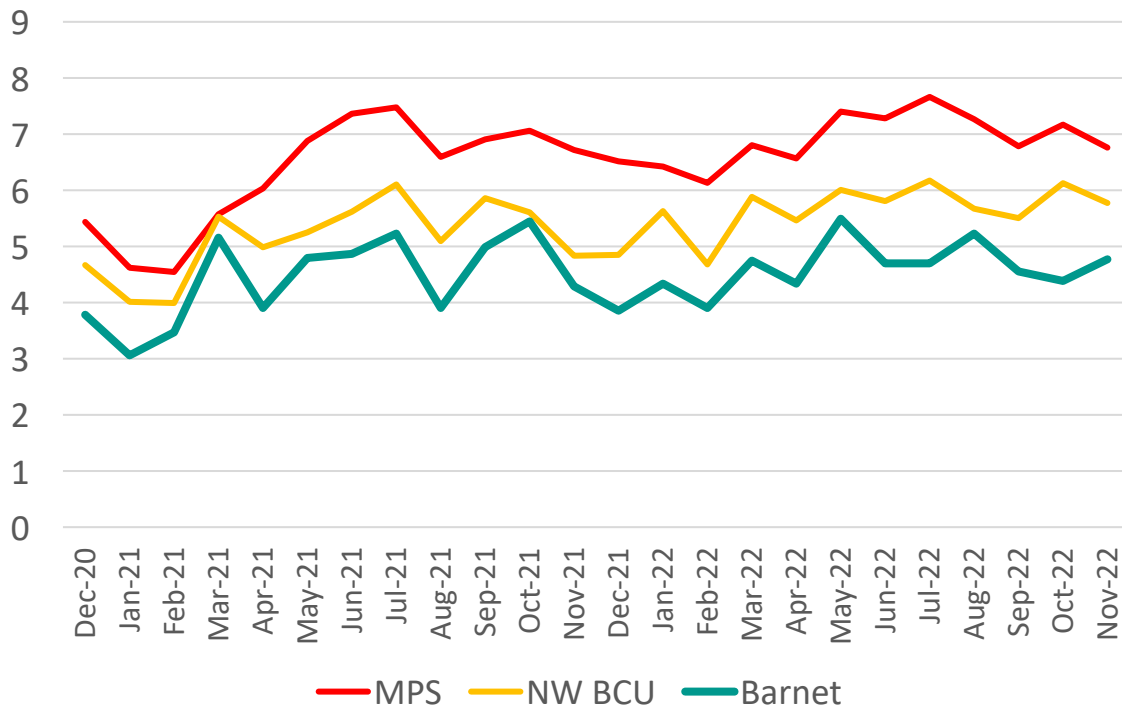
There were 191 cases of Robbery of Personal Property in the 3 months of September 2022 to November 2022. In the same period 12 months prior there were 175. This is an increase of 9.1%

Violence with Injury

In the 3 months of September 2022 to November 2022 there were 569 cases of Violence with Injury in Barnet

Trend

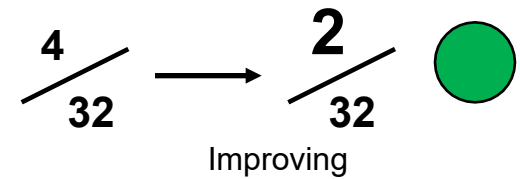
Violence with Injury per 10,000 Population



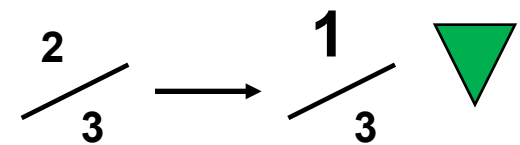
There were 2283 cases of Violence with Injury in Barnet in the 12 months up to November 2022. In the 12 months prior there were 2195. This is an increase of 4%

3 Month Performance

MPS Comparison (3 Month Period) change from same period last year.



NW BCU Comparison (3 Month Period) change from same period last year.



There were 569 cases of Violence with Injury in the 3 months of September 2022 to November 2022. In the same period 12 months prior there were 611. This is a decrease of 6.9%

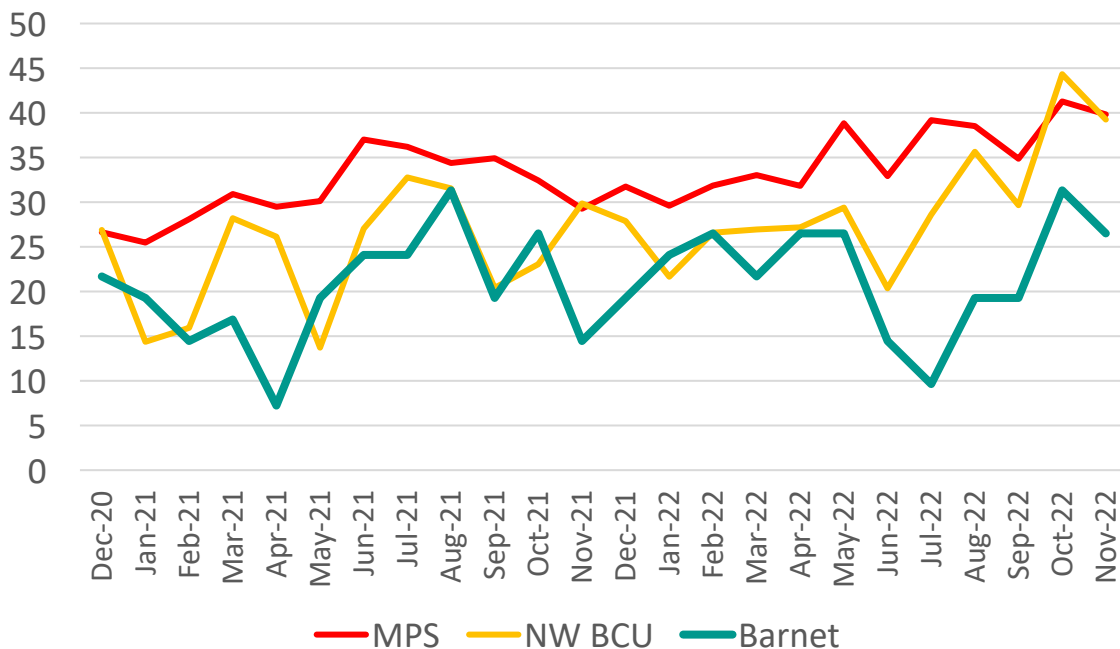
Knife Crime With Injury



In the 3 months of September 2022 to November 2022 there were 28 cases of Knife Crime With Injury in Barnet

Trend

Knife Crime With Injury per 1,000,000 Population



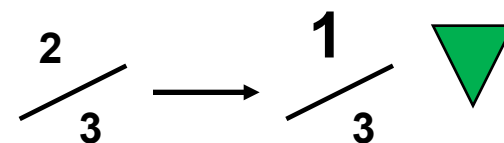
There were 91 cases of Knife Crime With Injury in Barnet in the 12 months up to November 2022. In the 12 months prior there were 84. This is an increase of 8.3%

3 Month Performance

MPS Comparison (3 Month Period) change from same period last year.



NW BCU Comparison (3 Month Period) change from same period last year.



There were 28 cases of Knife Crime With Injury in the 3 months of September 2022 to November 2022. In the same period 12 months prior there were 19. This is an increase of 47.4%

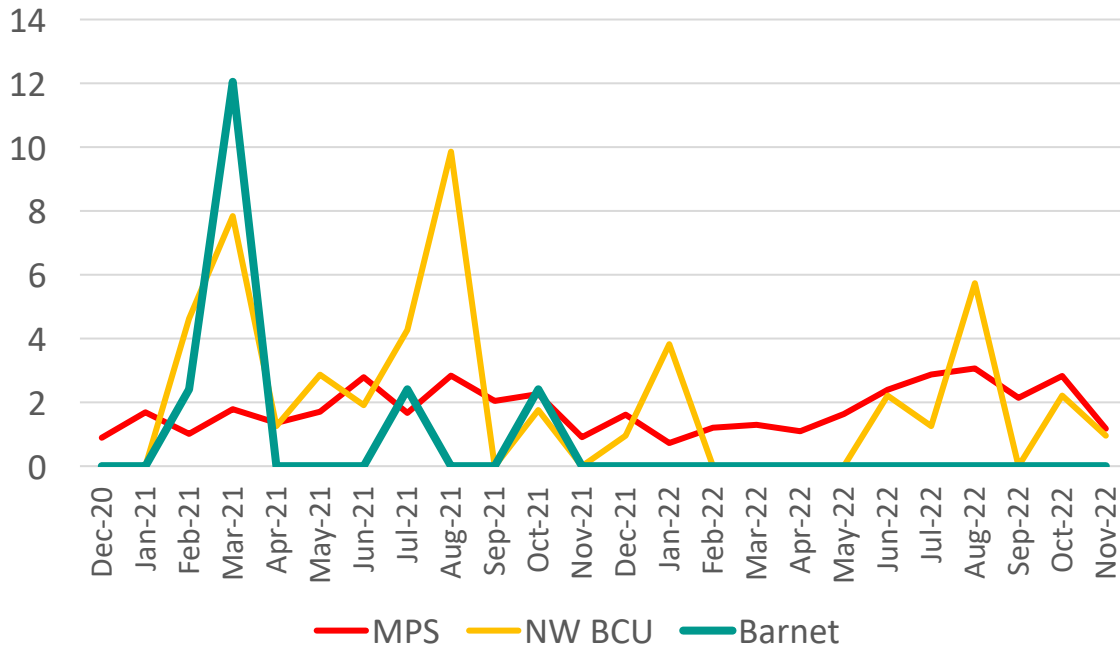
Gun Crime Lethal Barreled Discharged



In the 3 months of September 2022 to November 2022 there were 0 cases of Gun Crime Lethal Barreled Discharged in Barnet

Trend

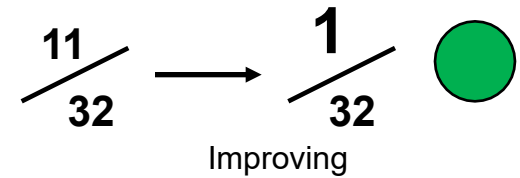
Gun Crime Lethal Barreled Discharged per 1,000,000 Population



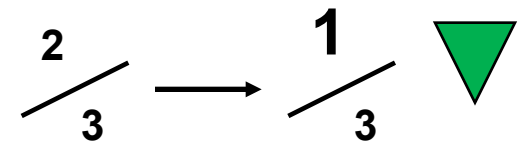
There were 0 cases of Gun Crime Lethal Barreled Discharged in Barnet in the 12 months up to November 2022. In the 12 months prior there were 8. This is a decrease of 100%

3 Month Performance

MPS Comparison (3 Month Period) change from same period last year.



NW BCU Comparison (3 Month Period) change from same period last year.



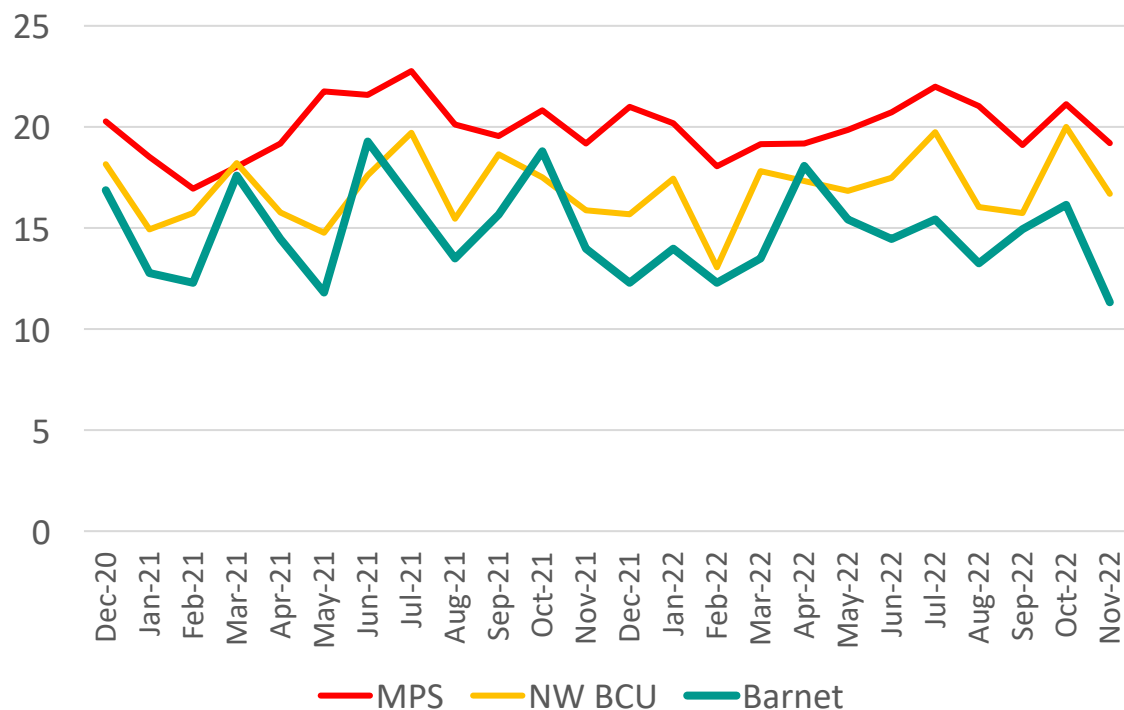
There were 0 cases of Gun Crime Lethal Barreled Discharged in the 3 months of September 2022 to November 2022. In the same period 12 months prior there were 1. This is a decrease of 100%

Domestic Abuse VWI

In the 3 months of September 2022 to November 2022 there were 176 cases of Domestic Abuse VWI in Barnet

Trend

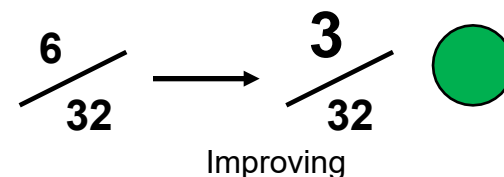
Domestic Abuse VWI per 100,000 Population



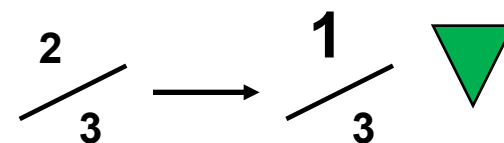
There were 710 cases of Domestic Abuse VWI in Barnet in the 12 months up to November 2022. In the 12 months prior there were 761. This is a decrease of 6.7%

3 Month Performance

MPS Comparison (3 Month Period) change from same period last year.



NW BCU Comparison (3 Month Period) change from same period last year.



There were 176 cases of Domestic Abuse VWI in the 3 months of September 2022 to November 2022. In the same period 12 months prior there were 201. This is a decrease of 12.4%

Anti-Social Behaviour – Cases

Data is 12 months up to November 2022

ASB Tools and Powers Outcomes: CPNWs CPNs PCOs, CBOs

Month	CPNW	CPN	PCO	Injunction	CBO
April	6	0	0	0	0
May	9	0	0	0	0
June*	108	4	0	0	0
July*	40	0	0	0	0
August	8	0	1	0	0
September	2	1	0	0	0
October	12	0	3	0	0
November	8	0	1	0	0

Key

CPNW - Community Protection Notice Warning – precursor to CPN

CPN - Community Protection Notice – used to stop a person/bus./org. committing ASB which spoils the community's quality of life

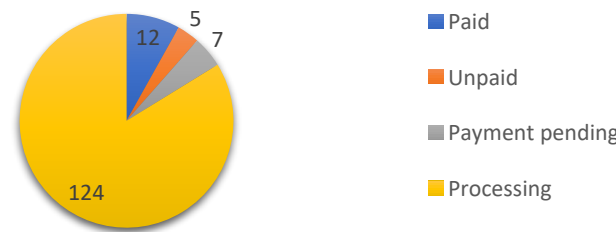
PCO - Premises Closure Order – used to protect victims and communities by closing premises that are causing nuisance or disorder

CBO - Criminal Behaviour Order – available on conviction of a criminal offence, used for the most serious and persistent offenders.

*Significant increase due to fly-tip prevention work with Barnet Homes during the Garrowsfield and Millbridge Estate moves.

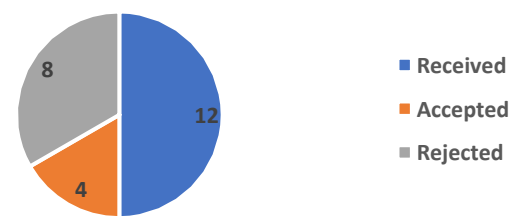
Fixed Penalty Notices: 12 months up to November 2022

FPN data 12 months to November 2022



Community Trigger*: 12 months to November 2022

Number of Community Triggers to November 2022



*Community Triggers give victims and communities the right to request a review of their case (where the local threshold is met), to bring agencies together to take a joined up, problem solving approach for the victim.

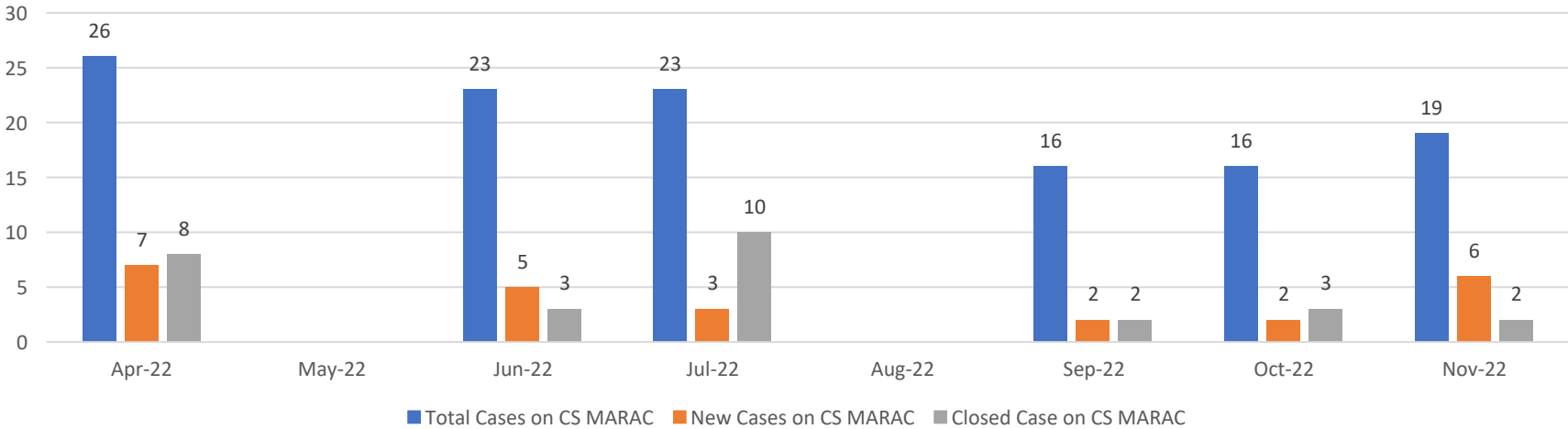
Anti-Social Behaviour - Community Safety MARAC (Multi-Agency Risk Assessment Conference) Cases



Data is from April 2022-November 2022

Community Safety MARAC Cases (April 2022- November 2022)

CS MARAC Cases April 2022- November 2022



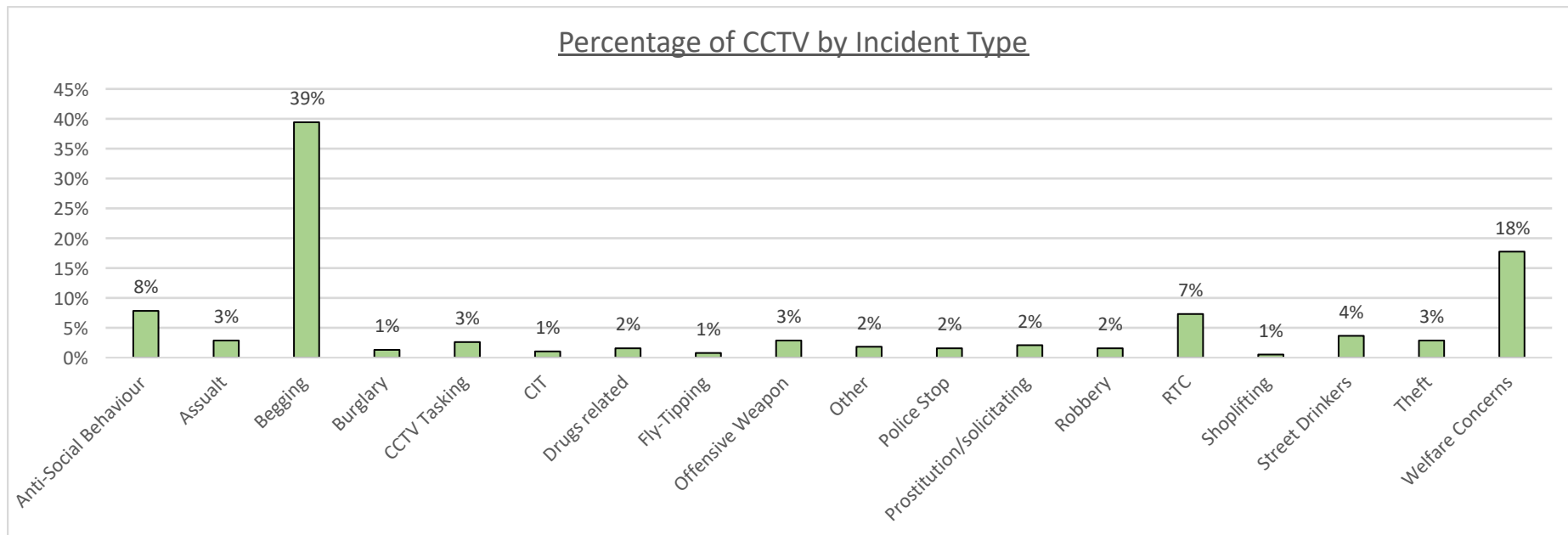
Between April 2022 - November 2022:

- Total CS MARAC cases average approx. 20 per month (ongoing cases, subject to actions from CS MARAC panel/partners)
- New CS MARAC cases average approx. 4 per month
- Closed CS MARAC cases average approx. 5 per month
- The CS MARAC is held every 6 weeks therefore there was no CS MARAC in May 2022 and Aug 2022

CCTV Recorded Incidents

From 24th October 2022-29th November 2022 there were 383 incidents captured by CCTV in Barnet

CCTV by Incident Type 24th Oct 2022-29th Nov 2022



*Other refers to incidents of vandalism and fraud

Between 24th Oct 2022 and 29th Nov 2022:

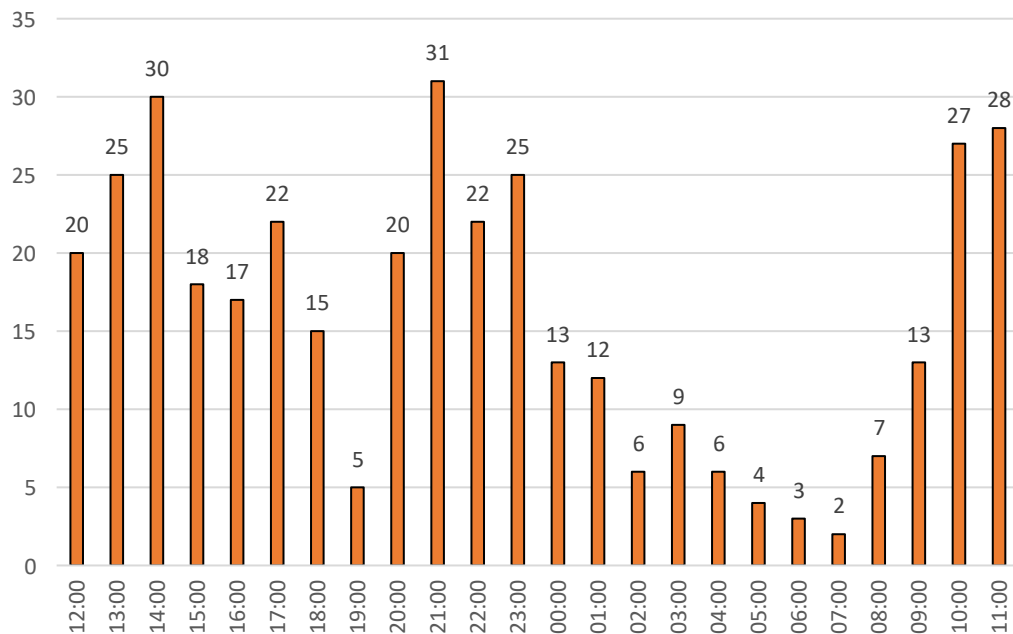
- 39% of CCTV incidents involved Begging
- 18% of CCTV incidents involved a Welfare Concern
- 8% of CCTV incidents involved Anti-Social Behaviour
- 7% of CCTV incidents involved an RTC (Road Traffic Collision)

CCTV Recorded Incidents cont.

From 24th October 2022- 29th November 2022 there were 383 incidents captured by CCTV in Barnet

Time of Incidents: 24th October 2022- 29th November 2022

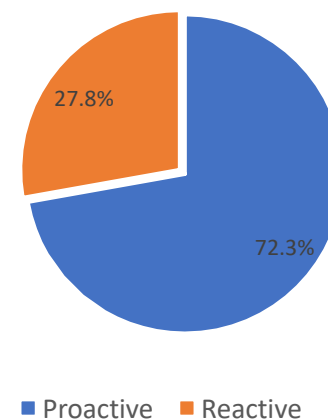
Number of CCTV Incidents by Time of Day:



- The above chart shows the quietest periods are between midnight and 0900hrs.

Proactive or Reactive Incidents: 24th October 2022- 29th November 2022

Proportion of Proactive vs Reactive Incidents Captured on CCTV



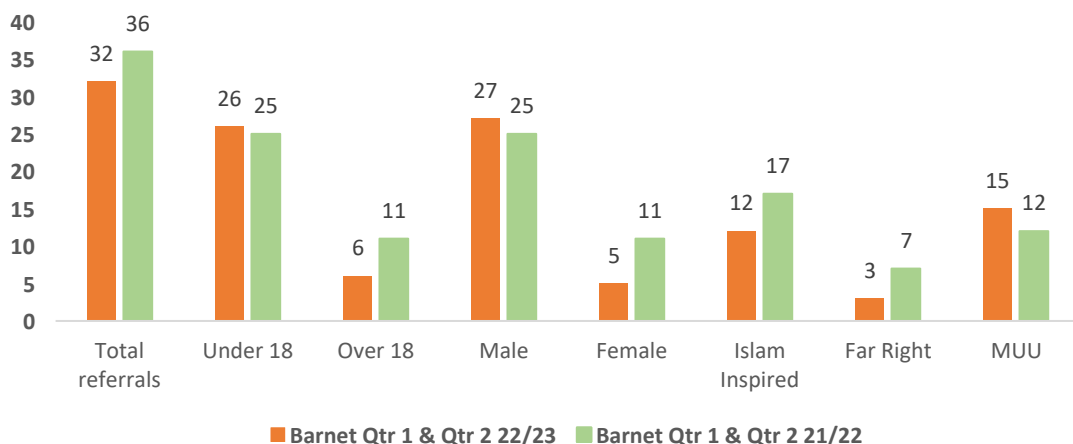
- The above pie chart shows the majority of CCTV incidents captured are proactive (by the control room staff).

PREVENT: Number of Referrals Barnet Qtrly Comparison

For Quarter 1 and Quarter 2 (April to September) 2021/22 and 2022/23

Trend

PREVENT in Barnet: (Number of referrals) Qtr 1 & Qtr 2
(April-September 2021/22 and April-September 2022/23)



There were 32 PREVENT referrals in Barnet in the 6 months up to September 2022. In the same 6 months in the previous year, there were 36.

This is a decrease of 11%

In Barnet over the two comparable quarters of 2021/22 and 2022/23, the data shows the majority of referrals involve:

- Male (84%)
- Under 18 (81%)
- MUU inspired (47%)

Quarter 1 and Quarter 2 (Apr-Sept 2021/22 & Apr-Sept 2022/23)

PREVENT in Barnet	2022/23	2021/22	% change 2022/23 vs 2021/22
Total referrals	32	36	-11%
Under 18	26	25	4%
Over 18	6	11	-45%
Male	27	25	8%
Female	5	11	-55%
Islam Inspired	12	17	-29%
Far Right	3	7	-57%
MUU	15	12	25%

In the 6 months to September 2022, compared to the same period the previous year:

- Far right referrals decreased by 57%
- Female referrals decreased by 55%
- Referrals of over 18's have decreased by 45%
- Islam Inspired referrals decreased by 29%
- Mixed, Unstable and Unclear (MUU) referrals increased by 25%

PREVENT: Percentage of Referrals - National Comparison

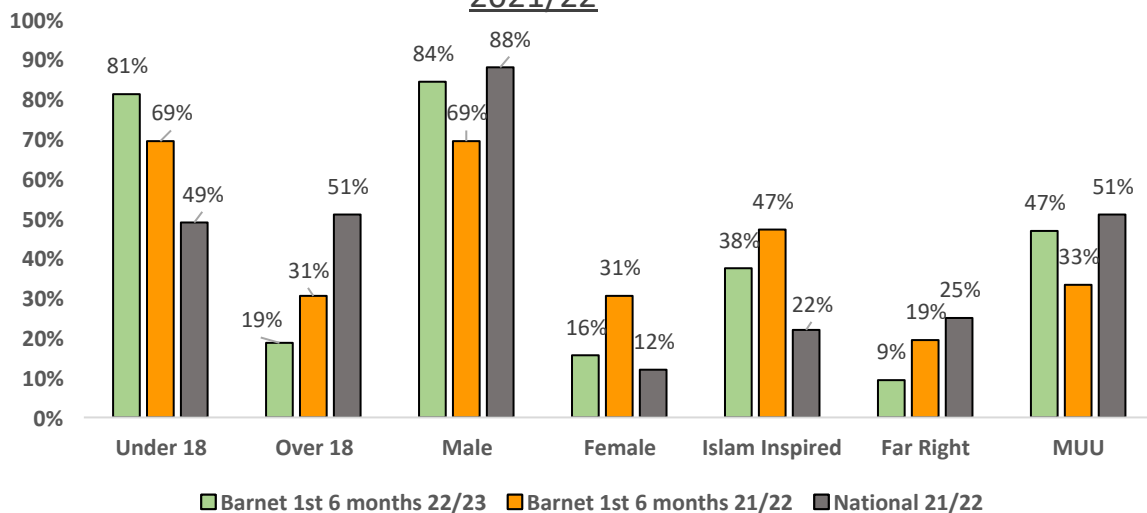


Quarter 1 and Quarter 2 (April to September) 2021/22

Trend

PREVENT in Barnet: (Percentage of referrals) Apr-Sept

2021/22



Barnet vs National

Total Referrals Percentage Point Difference: Barnet vs National (Quarters 1 and 2) April-September 2021/22.

Barnet Percentage Difference vs National 2021/22	
Under 18	20%
Over 18	-20%
Male	-19%
Female	19%
Islam Inspired	25%
Far Right	-6%
MUU	-18%

In Qtrs. 1 & 2 of 2021/22 in Barnet, compared to the National average there was:

- +20% point difference in under 18 referrals
- +25% point difference in Islam inspired referrals
- -18% point difference in Mixed, Unstable and Unclear referrals (MUU)